



**BΣΨ**



**MISSOURI S&T**



**BETA SIGMA PSI**

**NATIONAL LUTHERAN FRATERNITY**



# What is Beta Sigma Psi?

Beta Sigma Psi is a Greek organization founded nationally in 1925 and chartered at Missouri S&T in 1952. The longest standing Christian fraternity globally, Beta Sigma Psi provides a positive environment for Christian men to thrive in school in addition to developing outside the classroom. Beta Sigma Psi turns high school seniors into well rounded gentlemen throughout the course of their collegiate career.



# Scholastic



## *Scholastically Superior*

Beta Sigma Psi has been historically ranked among the academic leaders on campus. The house GPA consistently exceeds the all men's average and campus average. It is no surprise we have the highest new-member GPA of all Fraternities on campus for the 2021 year.

### **So How Do We Do It?**

Our study system keeps track of who is falling behind academically and helps them reach their full potential. Every member's GPA is evaluated at both midterm and the end of each semester. This evaluation determines how many study hours an individual is on for the next half of a semester. Being a student is more than just a job while on campus, it's a lifestyle. Beta Sigma Psi provides a proven foundation to maintain a successful path.



## *Scholarships*

We offer a number of scholarships to our members to reward achievement and dedication.

\$2,000 - Martin Luther Scholarship to Lutheran freshmen\*

\$875 - Beta Sigma Psi Miner Alumni Scholarship\* (x2)

\$2,500 - Lutheran Freshman Scholarship\* (x2)

\$1,000 - Man of the Year Scholarship - active member req.

\* Offered to incoming freshman, visit [mstbetasig.org](http://mstbetasig.org) for more information

## *Associate Member Guidance*

### **Study Hour Blocks**

Flexible Study Hours

6:00 pm - 8:00 pm

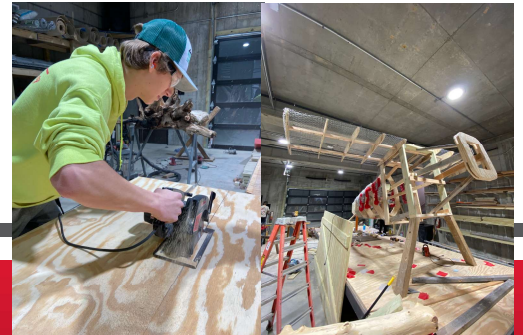
8:30 pm - 10:30 pm

### **Quiet Hours (Sunday - Thursday)**

6:00 pm - 10:00 am the following morning

### **Big Brother Program**

Each Incoming freshman is assigned an upperclassmen roommate, referred to as his big brother. The big brother encourages good study habits and helps new members adjust to living and thriving in a college environment. Big brothers help with everything from finding the right building on campus to wearing the right theme for a social event. This big brother relationship leads to a bond that each member will carry with them through their entire time at Beta Sigma Psi.



### **Required Electronic Class File Submission**

Every member of Beta Sigma Psi is required to submit a class file each semester. All of these files are available to new members their first day of membership. These files allow insight into previous test formats and serve as an effective study tool.



# Brotherhood / Social

## ***Brotherhood***

One of the most inviting aspects of joining a fraternity is the idea of establishing brotherhood. At Beta Sig you'll be introduced to 60+ members of the house, allowing you to fit in right where you belong as soon as you join the fraternity. We also plan several brotherhood events throughout each semester to further develop strong relationships between all members of the house.

## ***Socially Involved***

Beta Sigma Psi encourages its members to branch out and form new friendships outside of the house. We hold socials with various organizations on campus throughout the semester and remain very involved both within our community and on campus. By broadening our horizons we build connections with sororities, other fraternities, and great people all over the community.



## ***Service***

Every member participates in a number of service and philanthropy events each semester. Service is a great way to give back to the community and is a large part of Beta Sig culture. Last year, Beta Sig volunteered over 3,600 hours of service. The following highlight a few service events Beta Sig takes a part of.

### **Heit's Point Service Trip**

An annual service trip to a Christian Retreat camp where we've constructed livestock enclosures, drain systems, and provided other assistance as needed.

### **Immanuel Work Days**

We volunteer some of our Sunday afternoons to help the local Lutheran church with a day of work projects.

### **Rajun Cajun**

All-you-can eat event hosted by our fraternity with all proceeds going to charities.

# Faith / Intramurals



## *Faith*

We are a group of men who embrace a devotional experience during our pursuit for higher education at Missouri S&T. One thing that sets Beta Sigma Psi apart from other fraternities is that many of our members are connected through the Lutheran faith. While this is a common bond between many of our members, being officially part of the Lutheran faith is not required to become a member of Beta Sigma Psi. There are several Christian denominations represented strongly within our fraternity.

## *Participation and Intramurals*

Today's greatest leaders learned through experiences. The members of Beta Sigma Psi are required to tryout organizations on campus both within their major and outside it.

Beta Sig also encourages participation and attendance in a variety of intramural sports. Getting involved in IMs is a great way to take a break from course work and helps build camaraderie.





# Amenities

## *Additional Assets*

### **Laundry Rooms**

*Free!*

5 washers and 5 dryers  
All NEW high efficiency Washers and dryers on second and third floors

### **Newly Renovated Rooms**

Suite Style  
Study/Sleep Room setup

### **Brand New Individual Study Rooms**

#### **Study Room**

Newly Renovated  
Walls lined in whiteboards + 55" Interactive TVs

#### **Great Room**

Home theatre  
Pool Table

#### **Extracurriculars**

Table Tennis  
Professional Basketball Hoop + Patio Court

### **Wireless and wired Internet access**

**2 house computers, copier, printers, and 3D printers**

## Beta Sigma Psi

# \$8,300\*

### *Meal Plan Included*

\*Projected numbers for  
2022-2023

## University Housing Options

T.J. South Double: \$7,450 + \$3,130 meal plan = \$10,580

R.C. Double: \$8,330 + \$3,130 meal plan = \$11,460

U.C. Double: \$8,420 + \$3,130 meal plan = \$11,550

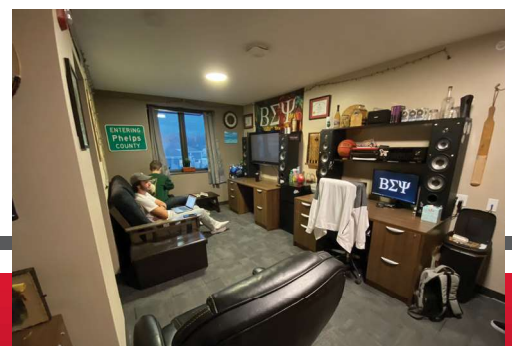
Missouri S&T 150 meals/semester plan used to compare to  
Beta Sig's 180 meals/semester plan

## *The Perfect Balance*

Beta Sigma Psi's house, is uniquely organized to provide each of its members with the most suitable environment to succeed. By having both group and individually focused study settings, our living arrangements work for everyone.

## *Commercial Sized Kitchen*

OPEN 24 HOURS A DAY. Breakfast products and other allotted items such as eggs, cheese, bread, fresh fruit, cereal, and milk are ALWAYS AVAILABLE. The College Chefs food service provides a continental breakfast, hot lunch and dinner Monday through Friday. Saturday meals are prepared and served by organized groups of in-house members.



# Moving Forward



Beta Sigma Psi has recently gone through a massive renovation, where the house was nearly doubled in size. With over \$1.5 million raised by the alumni, the project was finished back in Fall 2019. With the project completed the house now has a large workshop, brand new rooms, and several outside patio areas. Not only was the new addition added, but the old structure that stood for over 50 years, was entirely renovated and looks just as amazing as the new addition. But even though Beta Sigma Psi has gone through a major change with the renovations, we are still striving to uphold the traditions and principles that we have valued since our founding.





# BETA SIGMA PSI

## NATIONAL LUTHERAN FRATERNITY

For more information about joining  
Beta Sigma Psi, Please Contact:

Director of Recruitment  
Kory DeBold / (636) 358-7995 / [krdggq@mst.edu](mailto:krdggq@mst.edu)

Assistant Director of Recruitment  
Matthew Traum / (636) 980-7702 / [mttyg8@mst.edu](mailto:mttyg8@mst.edu)

